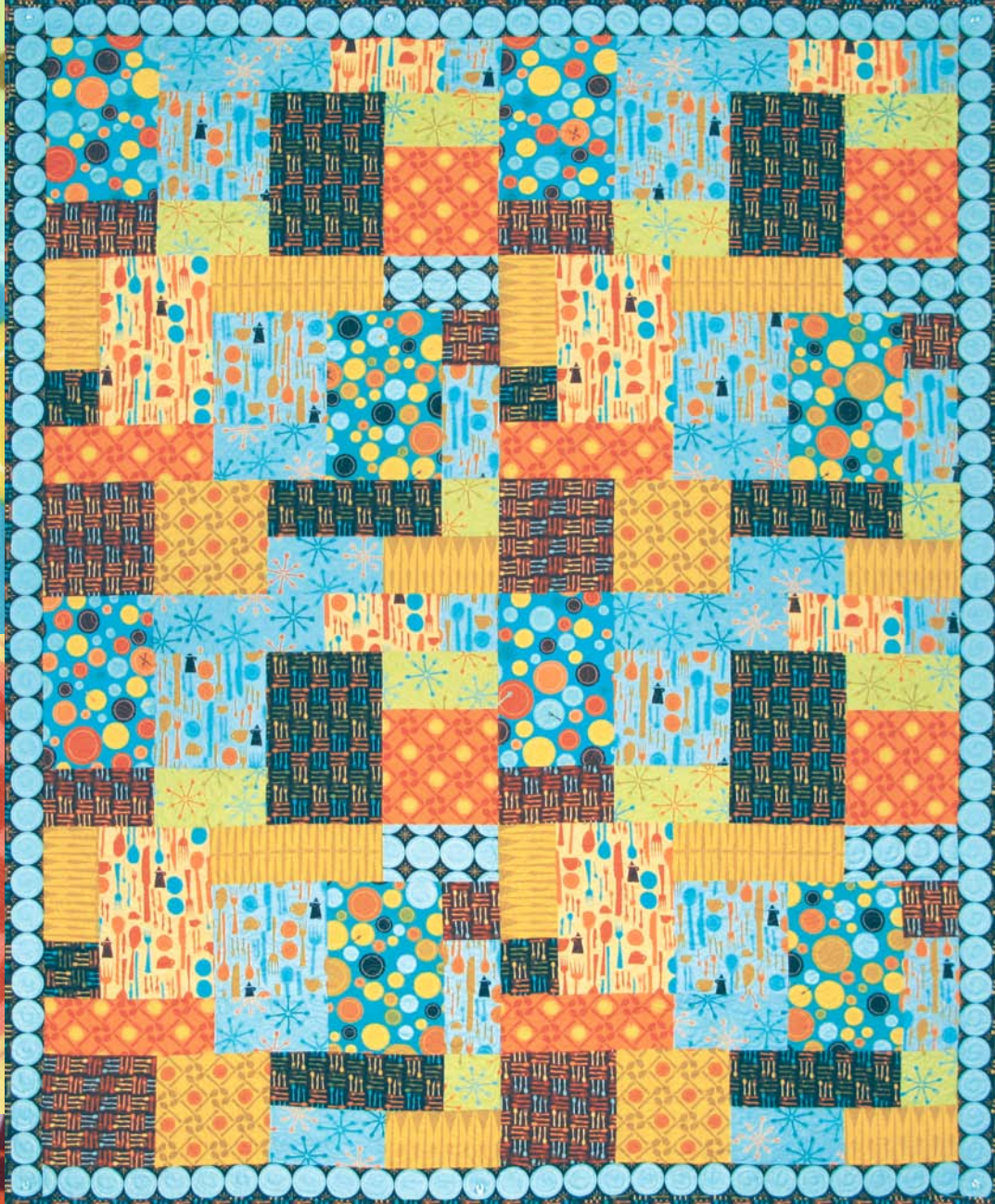


Introducing Andover Fabrics new collection:
Lizzy Dish fabrics by Lizzy House™

House Wares



Lizzy Dish fabrics by Lizzy House™
Quilt designed, made, and
machine quilted by Cherrí House
Finished size: 52" x 64"



makower uk®

1384 Broadway · New York, NY 10018 · (800) 223-5678
www.andoverfabrics.com

- Free Pattern Download Available -

House Wares Quilt

Introducing Andover Fabrics new collection: Lizzy Dish from Lizzy House™

Quilt designed, made, and machine quilted by Cherri House

Quilt finishes 52" x 64"

Planning

Add a splash of color to your kitchen with this graphic, contemporary quilt. Full of fun prints and rich colors, this quilt is quick and easy to make, having just 12 pieced units.

Read cutting instructions carefully. Some patches are cut on the lengthwise grain, meaning that the long side of the patch is parallel to the selvage. Be sure to watch print orientation throughout.

When piecing Black/Blue Plate Grid border strips, cut width of fabric strips so that ends of strips are 1/4" from edge of a blue plate. This will ensure that plates just touch at the seam, matching the print.

Fabric Requirements and Cutting Directions

3920-T 1/4 yard Dark Aqua/Peach/Brown Plate Print (piecing)

Cut (4) 6-1/2" x 9-1/2" rectangles

3922-N 1/2 yard Rust Utensil Squares Print (piecing)

Cut (4) 3-1/2" x 6-1/2" rectangles

Cut (4) 3-1/2" squares

Cut (4) 6-1/2" squares

3919-B 5/8 yard Light Blue Utensil Print (piecing)

*Cut (8) 6-1/2" squares

*Cut (4) 3-1/2" x 6-1/2" rectangles, cut on lengthwise grain

Cut (4) 3-1/2" squares

3921-G 1/2 yard* Light Green Star Print (piecing)

Cut (8) 3-1/2" x 6-1/2" rectangles

Cut (4) 3-1/2" squares

3923-O 1/2 yard Orange Spoon Lattice Print (piecing)

Cut (4) 6-1/2" squares

Cut (4) 3-1/2" x 9-1/2" strips

3922-K 1/2 yard**Black Utensil Squares Print (piecing)

Cut (4) 6-1/2" x 9-1/2" rectangles

Cut (4) 3-1/2" squares

Cut (4) 3-1/2" x 9-1/2" strips

3921-T 1/2 yard Light Aqua Star Print (piecing)

Cut (4) 3-1/2" x 9-1/2" strips

Cut (8) 3-1/2" x 6-1/2" rectangles

3919-Y 1/2 yard Yellow Utensil Print (piecing)

*Cut (4) 6-1/2" x 9-1/2" rectangles, cut on lengthwise grain

Cut (4) 3-1/2" x 6-1/2" rectangles, cut on lengthwise grain

3925-Y 7/8 yard Mustard Paired-Knives Print (piecing)

*Cut (4) 3-1/2" x 9-1/2" strips, cut on lengthwise grain and centered on knives

Cut (8) 3-1/2" x 6-1/2" rectangles, cut on lengthwise grain and centered on knives

3920-B 1/4 yard Turquoise/Rust/Yellow Plate Print (piecing)

Cut (4) 6-1/2" x 9-1/2" rectangles

3924-K 3/4 yard Black/Blue Plate Grid Print (piecing and outer border)

Cut (4) 3-1/2" x 6-1/2" rectangles

Cut (2) 2-1/4" x 48-1/2" strips, pieced from 3 width of fabric (WOF) strips centered on plates

Cut (2) 2-1/4" x 64" strips, pieced from 4 WOF strips centered on plates

3923-Y 1/4 yard Mustard Spoon Lattice Print (piecing)

Cut (4) 6-1/2" squares

*Cut first.

**Additional yardage needed for binding or backing (see below).

3921-G 3-1/2 yards Light Green Star Print (backing)

Cut and piece to fit quilt top with 4" overlap on all sides.

3922-K 5/8 yard Black Utensil Squares Print (binding)

Cut (7) 2-1/2" x width of fabric strips

Piecing the Blocks

Note: Carefully follow seaming order as shown in diagrams when sewing patches together.

1. Referring to Diagram A-1, stitch together assorted patches in fabrics and sizes shown to make A Section. Make 4 (Diagram A-2).
2. In same manner and referring to Diagram B-1, sew together assorted patches as shown to make B Section. Make 4 (Diagram B-2).
3. Referring to Diagram C-1 and in same manner as before, sew together assorted patches as shown to make C Section. Make 4 (Diagram C-2).

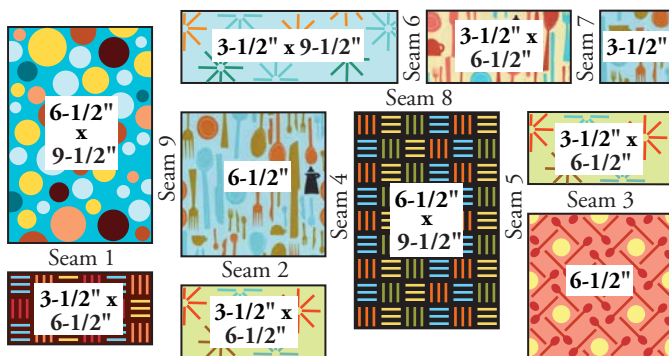


Diagram A-1

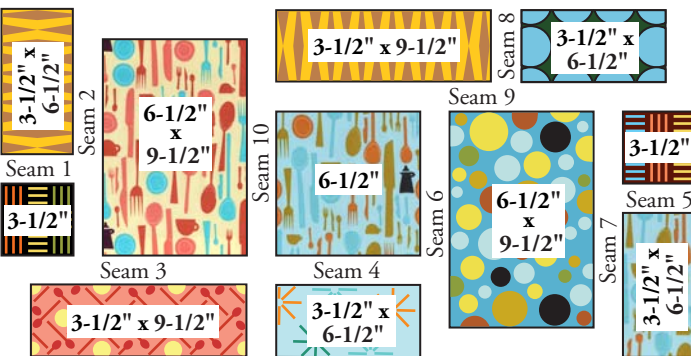


Diagram B-1

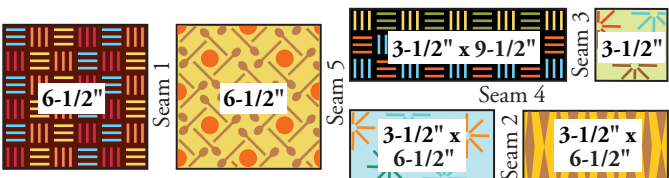


Diagram C-1

Assembling the Quilt

4. Refer to Quilt Diagram and photo for following steps. Sew 6 rows of 2 sections each. Stitch rows together as shown. Sew black/blue plate grid 48-1/2" strips to top/bottom. Stitch black/blue 64" strips to sides.

Finishing the Quilt

5. Layer quilt with batting and light green star print backing. Quilt as desired. Bind with black utensil squares print to finish the quilt.



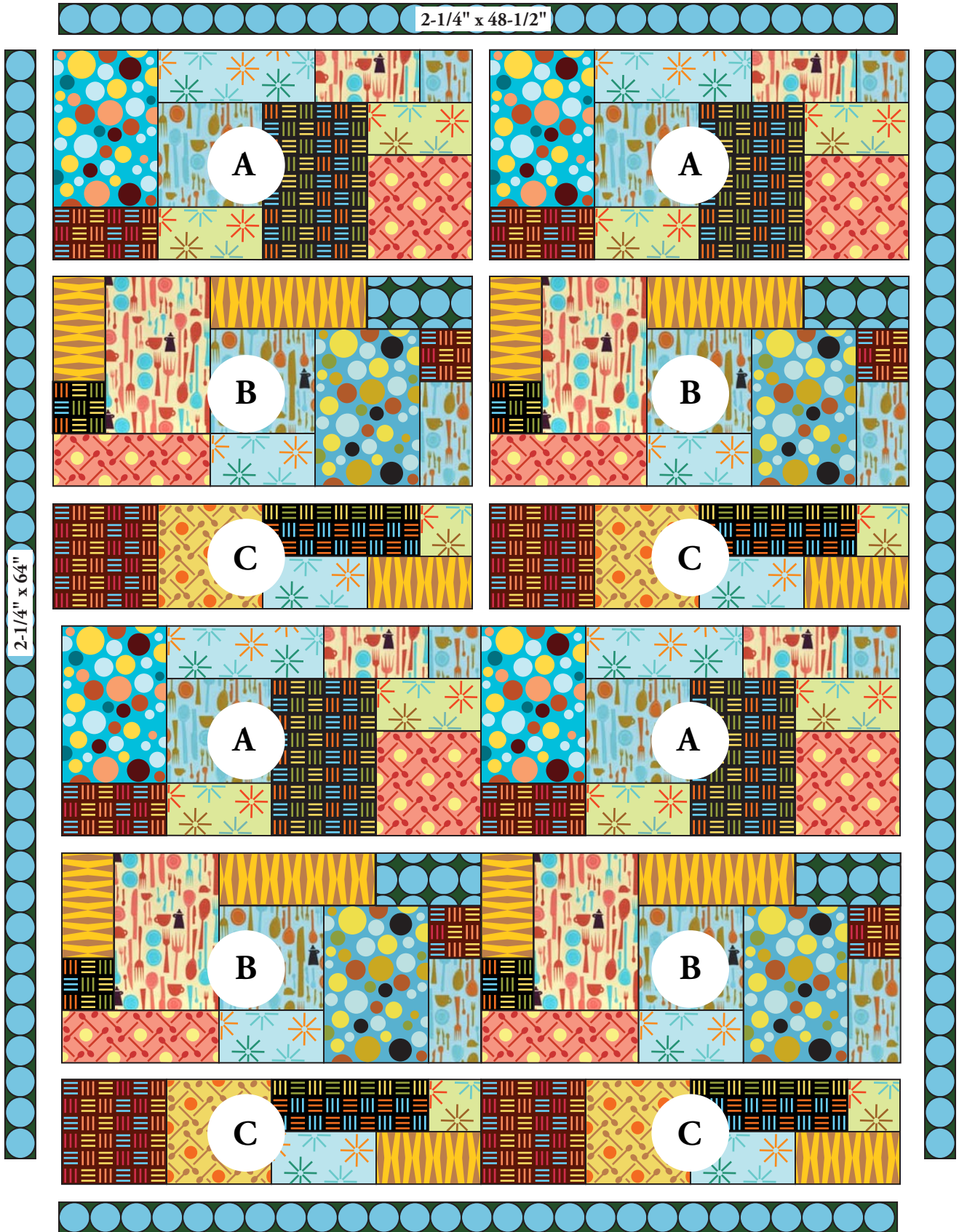
Diagram A-2



Diagram B-2



Diagram C-2



Quilt Diagram

1384 Broadway
 New York, NY 10018
 (800) 223-5678
 www.andoverfabrics.com

Lizzy Dish

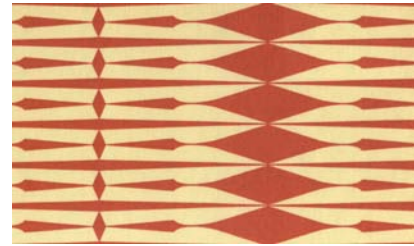
by Lizzy House™



3920-T*



3919-Y*



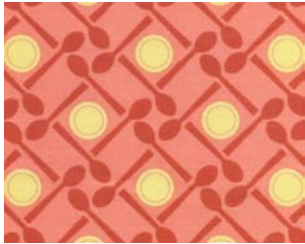
3925-O



1867-Y17



1867-T1



3923-O*



3924-P



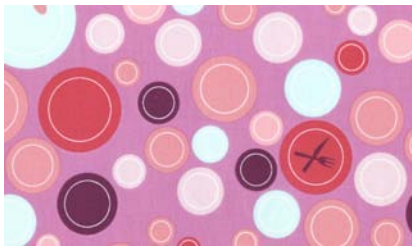
3921-T*



3922-N*



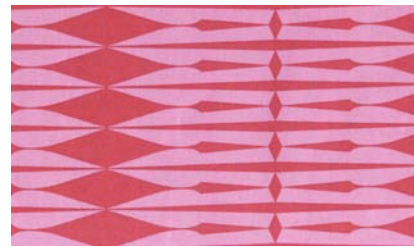
1867-R3



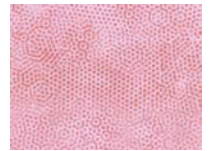
3920-E



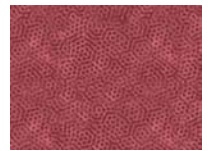
3919-E



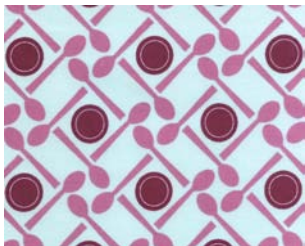
3925-R



1867-E17



1867-R5



3923-T



3924-E



3921-E



3922-R



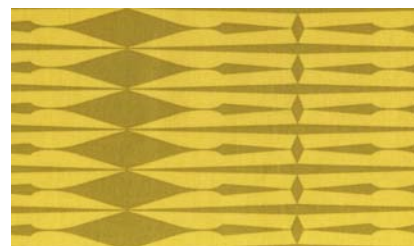
1867-R6



3920-B*



3919-B*



3925-Y*



1867-T9



1867-O



3923-Y*



3924-K*



3921-G*



3922-K*



1867-Y2



1867-V3

*Indicates fabric used in quilt pattern. Fabrics shown are 25% of actual size.

Free Pattern Download Available at www.andoverfabrics.com